

Future Neighbourhood Park on Watkiss Way

We're creating a new park at the corner of Watkiss Way and Burnside Road! Thanks to BC Transit, the Province of BC and the Capital Regional District, the Town has access to a 1.5-acre linear space along Watkiss Way where we are designing a new neighbourhood park for our community.



Last fall (2023) we gathered your thoughts on what you'd like to see in the new park. Now, our project team is excited to share a draft concept of the design, and we'd love to hear your feedback to help shape this space. Funds for park construction have been allocated in the Town's 2024 Capital Budget, and we're getting closer to bringing this project to life!

After this phase of consultation, we will use what we hear to finalize the design before it is presented to Council for final approval.



FUTURE WATKISS WAY NEIGHBOURHOOD PARK
Stay informed at www.viewroyal.ca/futurewatkisswaypark



What Shaped the Draft Design?

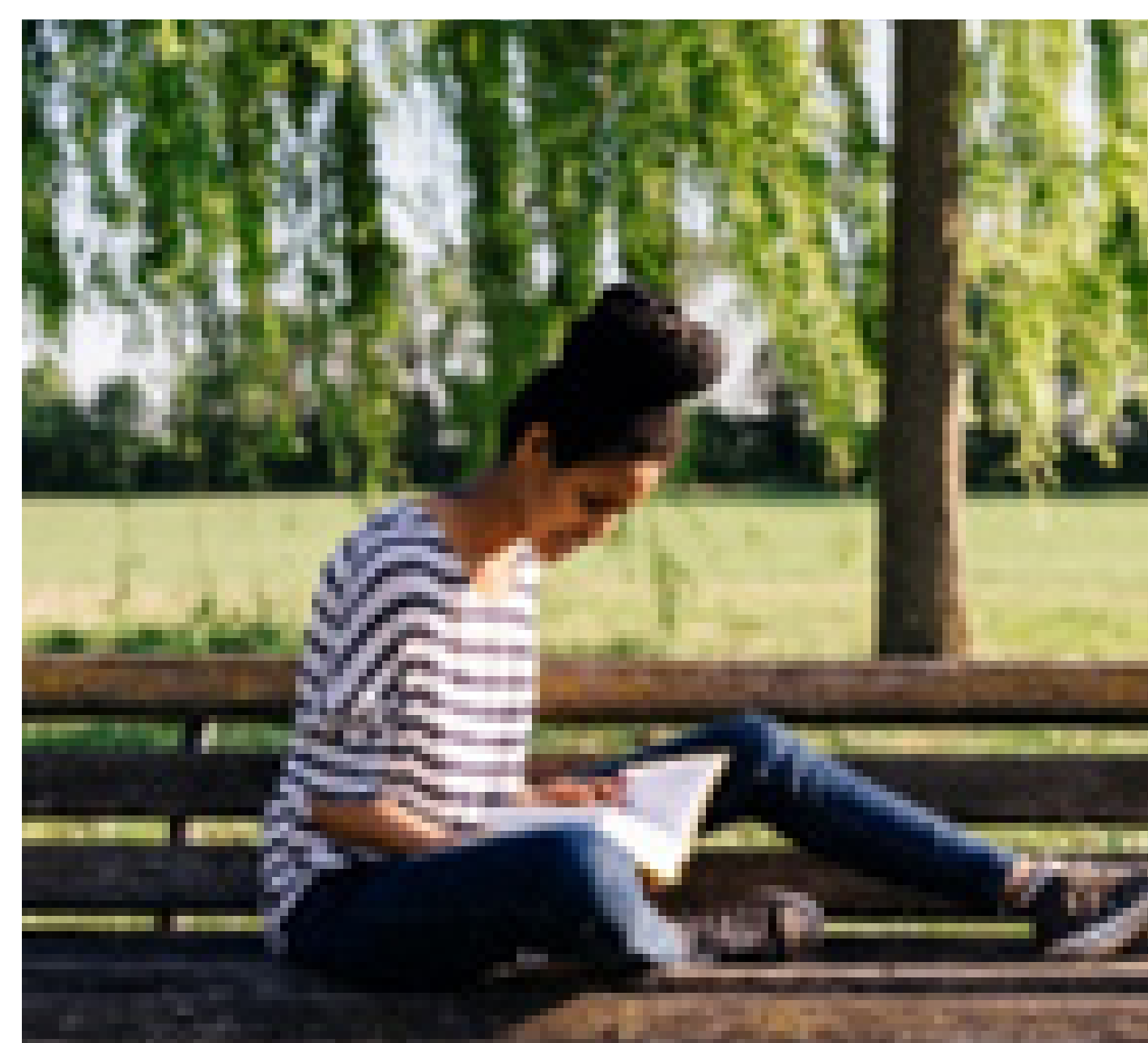
Technical Considerations:

This property is in the Burnside neighbourhood, near well-serviced Transit routes and the Galloping Goose Regional Trail.

A large CRD watermain runs underneath the park and access must be maintained, meaning permanent structures and asphalt cannot be installed. Less “permanent” features like benches, fencing, grass, and community garden plots are possibilities to be explored.

What We Heard- Fall 2024 Engagement:

- Preference for open grassy areas for recreation and quiet activities
- Desired features: seating, natural/native gardens
- Interest in amenities for cyclists and walkers
- Concerns about traffic safety, noise, and potential unwanted activities
- Desire for natural materials, like timber, in park design
- A blend of activities and features catering to various groups
- A desire for Indigenous involvement*



*The Town has initiated engagement with the Xwepsum and the Songhees Nations to expand their cultural presence through art, stories and landscape design in our community. This will be an ongoing endeavor that can be incorporated in future park upgrades.

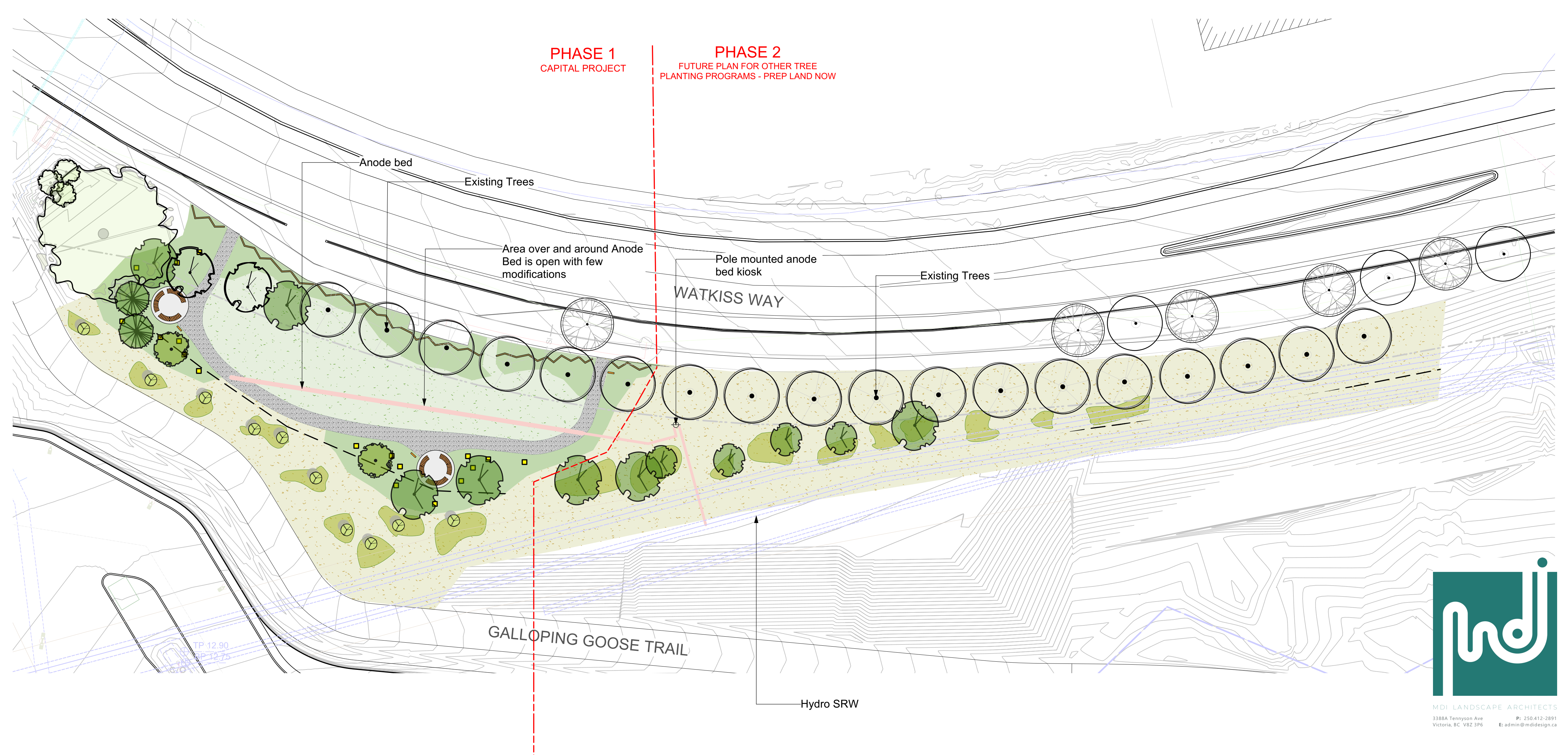


FUTURE WATKISS WAY NEIGHBOURHOOD PARK
Stay informed at www.viewroyal.ca/futurewatkisswaypark



What is Being Proposed for the Draft Design?

The new Watkiss Way neighbourhood park is two-Phased: Phase 1 being the predominant works for a quiet park, and Phase 2 adding more native plantings and additional open space. The Town has approved funding for Phase 1, with construction planned for 2024/2025. Phase 2 may be scheduled once additional funding is allocated or tree planting grants allow the work to happen sooner.



FUTURE WATKISS WAY NEIGHBOURHOOD PARK
Stay informed at www.viewroyal.ca/futurewatkisswaypark



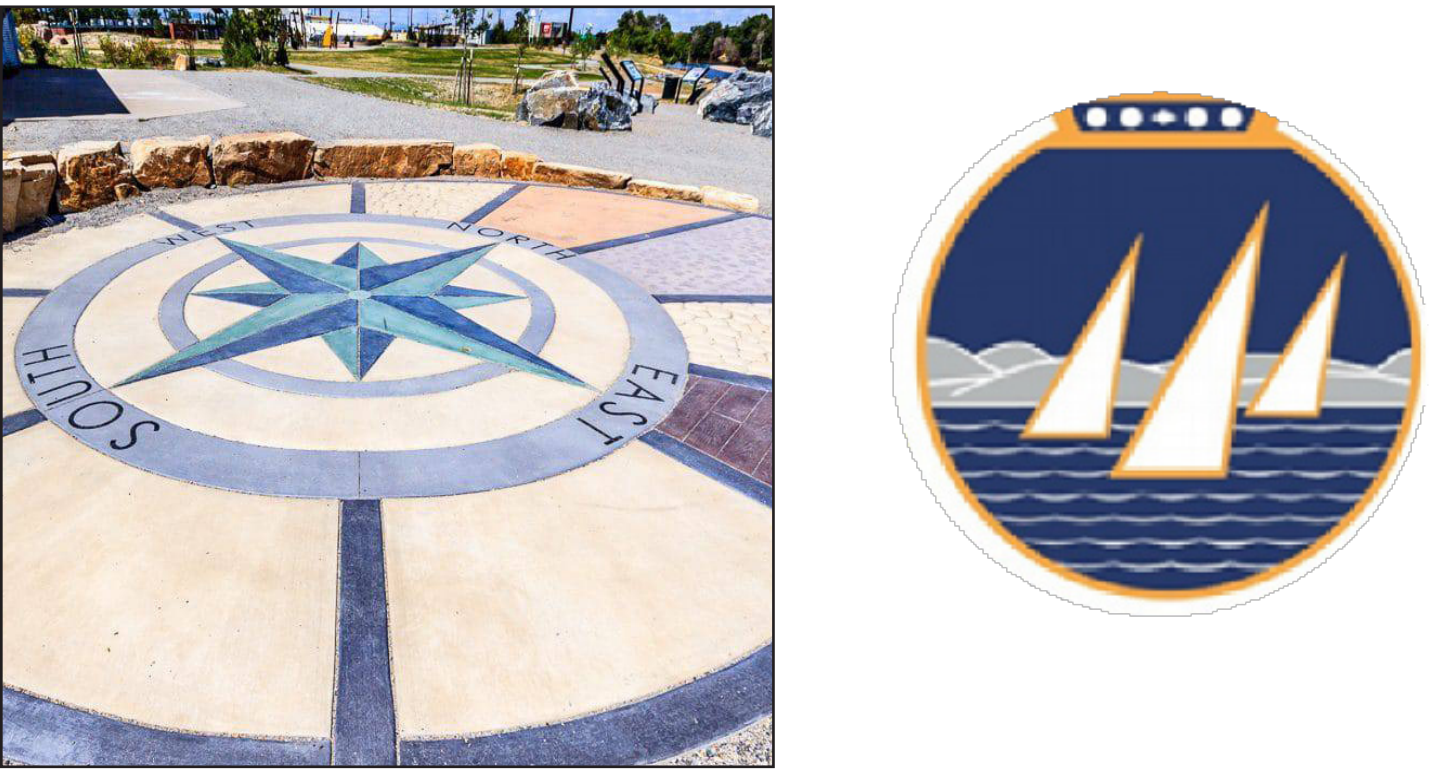
Phase 1: Park Design



1. Circular Seating Nodes



2. ToVR Symbol on Concrete



3. Bird Houses



4. Native Planting



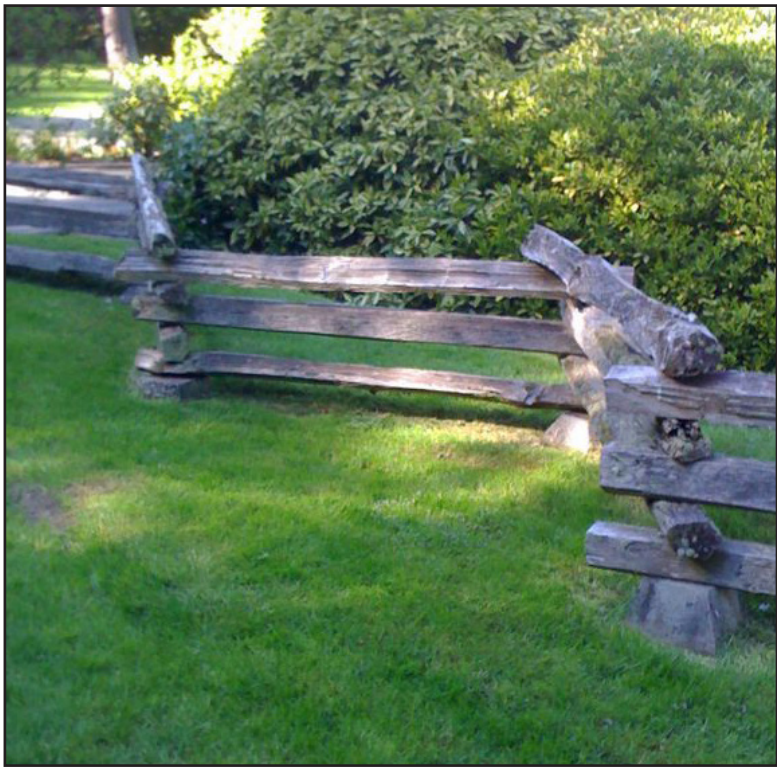
5. Gravel Path



6. Lawn Area




7. Split Rail Fence



FUTURE WATKISS WAY NEIGHBOURHOOD PARK
Stay informed at www.viewroyal.ca/futurewatkisswaypark





What do you think about the overall draft design?

I LOVE IT

I LIKE IT

I FEEL
NEUTRAL
ABOUT IT

I DISLIKE IT

I STRONGLY
DISLIKE IT

Does the proposed park design meet the objectives of a quiet park?

YES, IT MEETS
OBJECTIVES

PARTIALLY, BUT
COULD USE
ADJUSTMENTS

NO, IT DOESN'T MEET
OBJECTIVES



Are there specific features in the draft design that you like?

CURVED BENCHES*



VIEW ROYAL LOGO



BIRD HOUSES



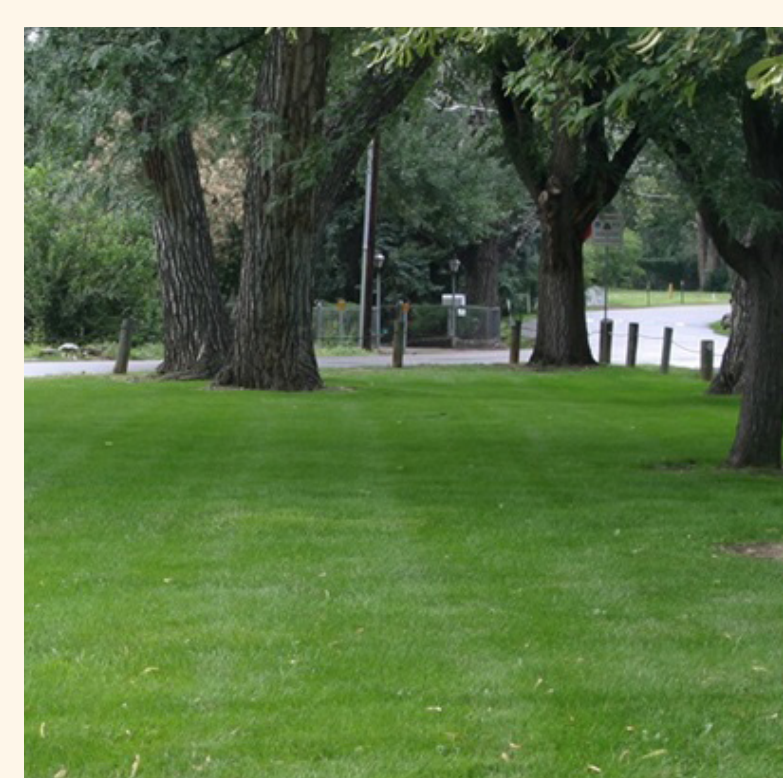
NATIVE PLANTING



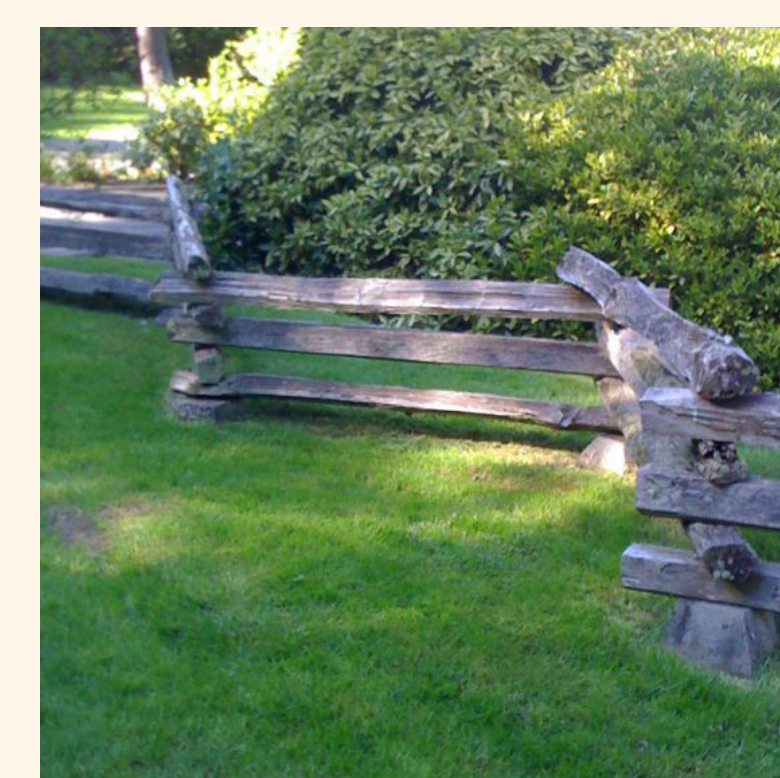
GRAVEL PATHWAY



LAWN AREA



SPLIT RAIL FENCE



ANY OTHER FEEDBACK?

*Final design will be subject to feasibility, costs, maintenance requirements, etc.

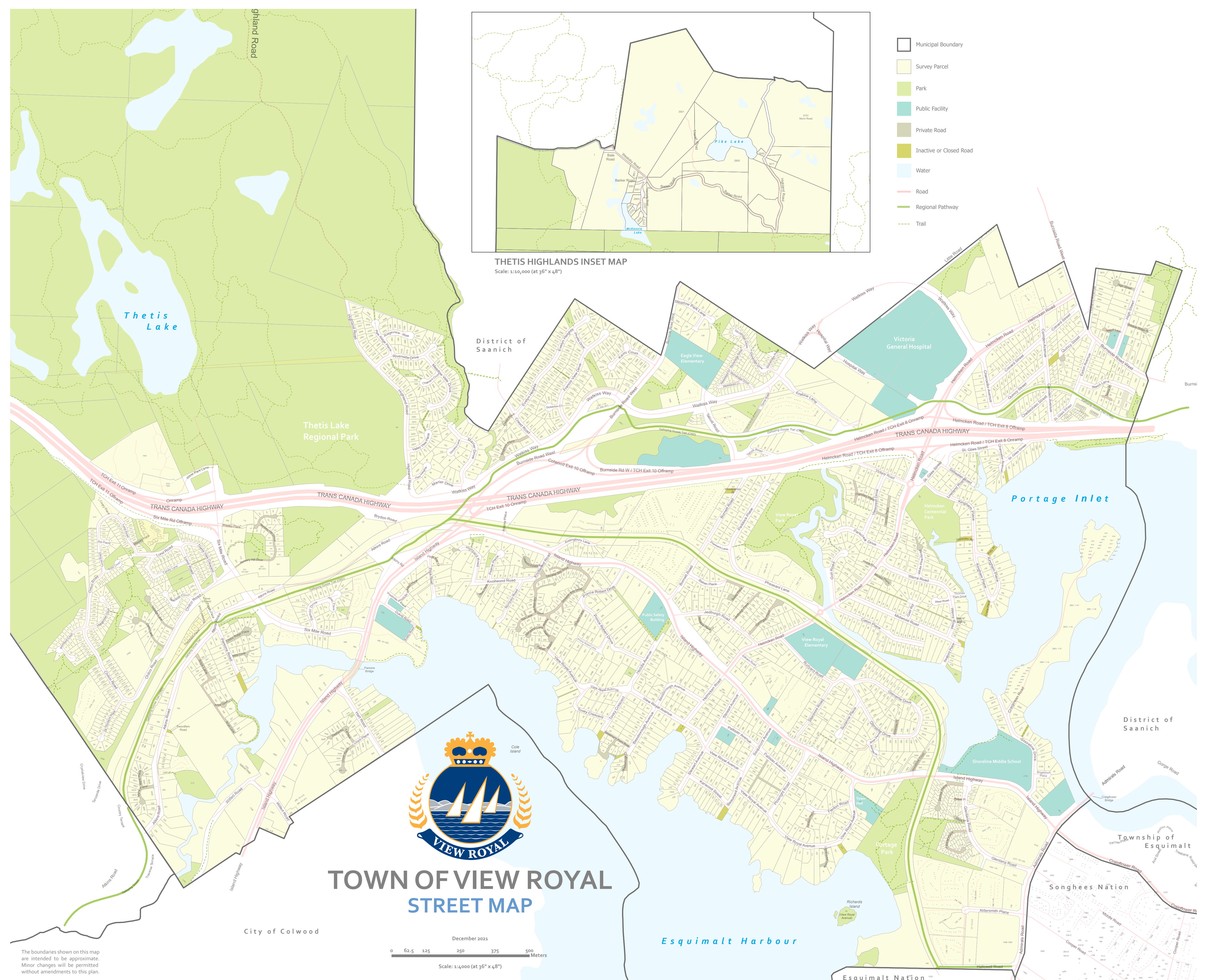


FUTURE WATKISS WAY NEIGHBOURHOOD PARK
Stay informed at www.viewroyal.ca/futurewatkisswaypark



Where do you live?

It's helpful to know where you live in relation to the park.



If your home isn't on the map, please let us know what municipality you live in.



FUTURE WATKISS WAY NEIGHBOURHOOD PARK
Stay informed at www.viewroyal.ca/futurewatkisswaypark

